



UNITED STATES POSTAL INSPECTION SERVICE

PROTECTING OUR MAIL

What was in your mailbox today?
Was there something special for you?

You may not think much about how letters and packages get from one location to another, but the United States Postal Service delivers over 318 million pieces of **mail** every day! That's A LOT of letters and packages!

With all that mail traveling around every day, **the people who work for the U.S. Postal Inspection Service have a big job:**

- We catch criminals who use the mail to commit a crime.
- We protect everyone who works for the Postal Service.
- And we protect YOU, because you are one of the millions and millions of Americans who get mail.

Postal inspectors protect the U.S. Mail, and all of us.

GENERAL
ANALYST

POSTAL
POLICE
OFFICER

U.S. POSTAL
INSPECTOR

INSPECTOR KIDS



LABORATORY
SPECIALIST

PROTECTING US ALL

The types of crime we fight have changed a lot in the 250 years the U.S. Postal Inspection Service has protected the mail. But our mission to help keep the U.S. Mail safe for you and your friends, family, and community is the same as it's always been. We promise to keep doing our job to protect you. If the U.S. Mail is used to commit a crime, postal inspectors are on the case!



VOCABULARY WORDS:

Benjamin Franklin – The famous inventor, scientist, and politician who became the first Postmaster General of the United States.

Postmaster General – The leader of the Postal Service.

Postmaster – The person in charge of an individual post office. There are thousands of postmasters throughout the country!

Postal Surveyor – They protected the mail, horse riders, and stagecoaches that delivered mail in the early days of America. They will eventually become postal inspectors.

Postal Inspector – These people investigate mail crimes and protect postal employees and YOU from dangerous things in the mail.

Postal Police Officer – These officers protect large and important buildings across the country that belong to the U.S. Postal Service.

General Analyst – Analysts help postal inspectors do research and figuring out who committed crimes.

Laboratory Specialist – These specialists are scientists who help Postal Inspectors examine items and mail from crime scenes to solve cases.

Mail Theft – When someone takes mail out of mailboxes or steals packages from people's houses. This is a federal crime!

Mail Fraud – When someone pretends to be you, or if someone tries to scam people out of money using the mail.

Illegal Items – Sometimes people try to send bad and dangerous things in the mail, like drugs, toxic chemicals, and even weapons.

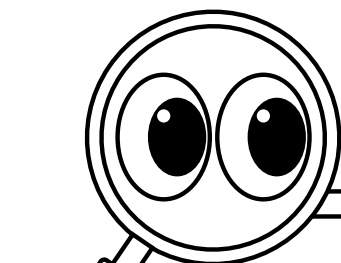
Counterfeit Stamps – When someone makes fake stamps to trick the Postal Service and send letters for free.

Stamp – Stamps are used to pay for shipping letters and packages. Everyone has to have a stamp on anything they send in the mail.

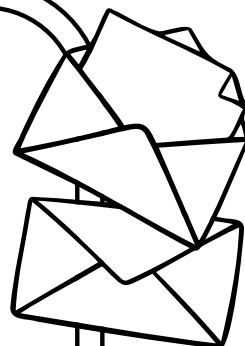


WORD SEARCH

POST OFFICE BADGE LETTER
CRIME MAIL POLICE



K	W	J	A	C	M	A	I	L	L
U	F	T	R	U	I	U	J	R	R
J	B	B	A	D	G	E	F	N	G
R	O	U	O	F	F	I	C	E	H
Q	Y	C	X	U	D	G	I	G	A
C	C	R	J	E	E	Z	L	Y	K
D	T	I	D	V	O	N	P	K	P
S	M	M	L	E	T	T	E	R	D
F	X	E	X	M	Y	K	W	S	J
P	O	L	I	C	E	P	O	S	T

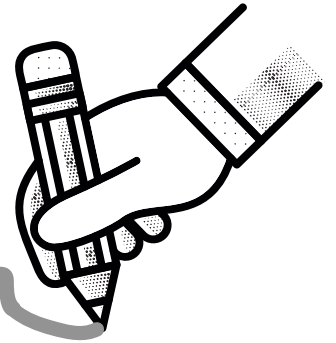


Instruction:

Find the words from the list hidden in the letter grid—they can go up, down, or left to right. Circle or highlight each word as you find it and keep searching until you find them all.

HANDWRITING

Comparison



POST

Office

Post

OFFICE

POST

Office

Instruction:

Look at the three handwriting samples. Use your investigation skills to see if you can tell which two sets are the same.



FINGERPRINT MATCHING



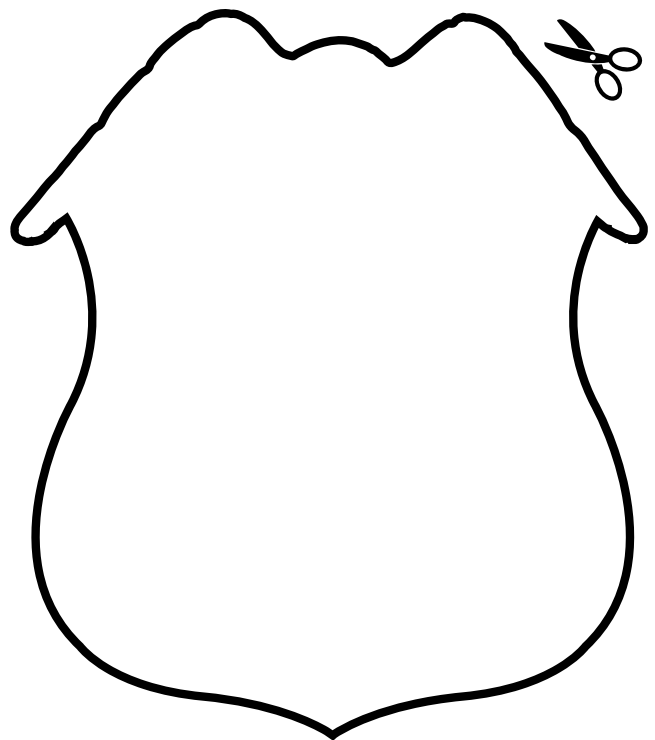
Instruction:

Look at the fingerprint samples. Use your investigation skills to find which fingerprints are the same. Draw a line to connect the matching pairs. All fingerprints will have a match!



Instruction:

Below is an example of a Junior Inspector Badge. In the blank badge, draw your own badge that you can cut out and wear!



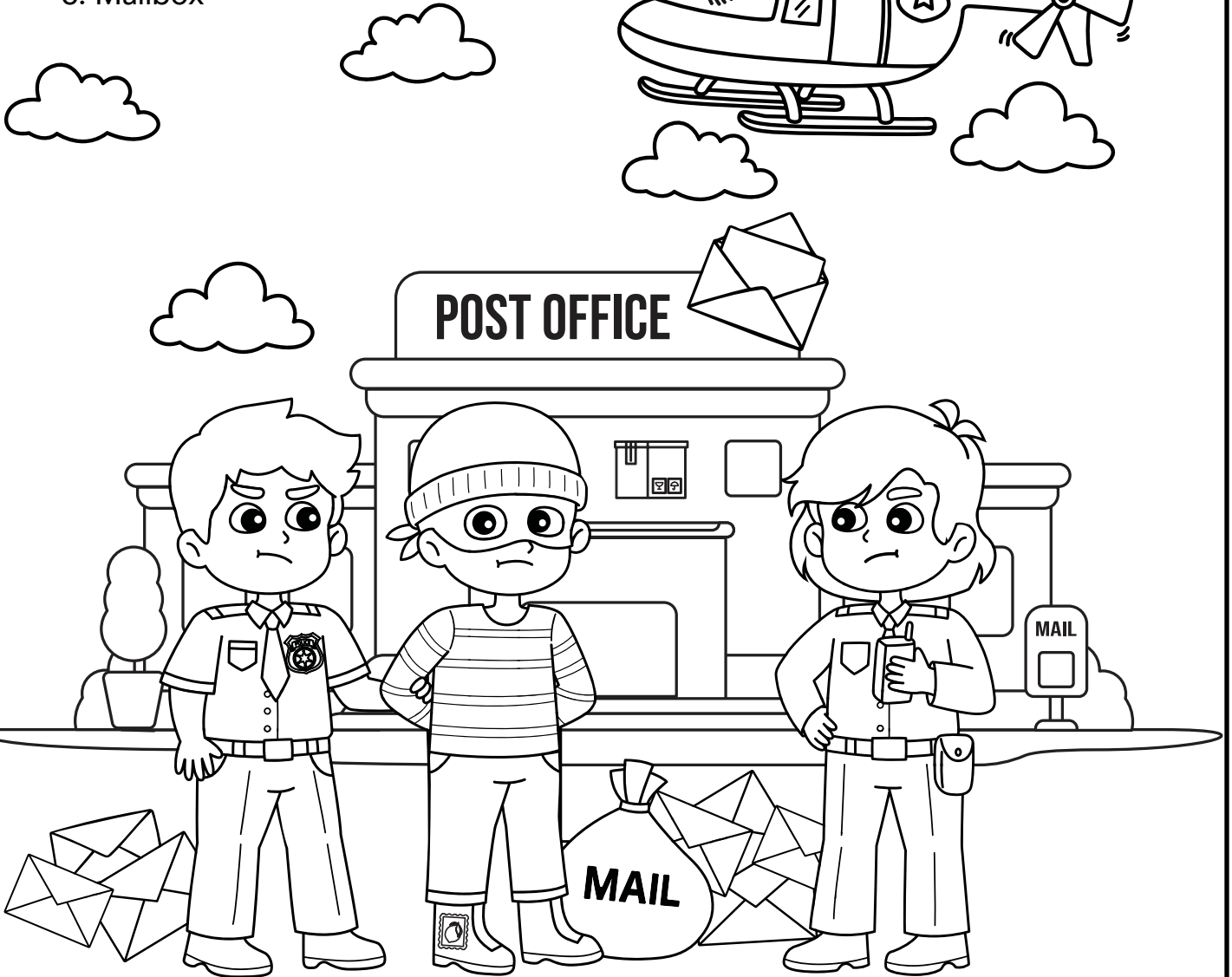
Instruction:

Inside the image, there are hidden objects related to the mail and postal inspectors. Can you find all of the hidden images?



Hidden objects:

1. Badge
2. Open Envelope
3. Stamp
4. Fingerprint
5. Package
6. Mailbox



ANSWER KEY



WORD SEARCH

K	W	J	A	C	M	A	I	L	L
U	F	T	R	U	I	U	J	R	R
J	B	B	A	D	G	E	F	N	G
R	O	U	O	F	F	I	C	E	H
Q	Y	C	X	U	D	G	I	G	A
C	C	R	J	E	E	Z	L	Y	K
D	T	I	D	V	O	N	P	K	P
S	M	M	L	E	T	T	E	R	D
F	X	E	X	M	Y	K	W	S	J
P	O	L	I	C	E	P	O	S	T

HANDWRITING COMPARISON

POST ~~Office~~

Post ~~OFFICE~~

POST ~~Office~~

FINGERPRINT MATCHING

EYE-SPY

LET'S COLOR

